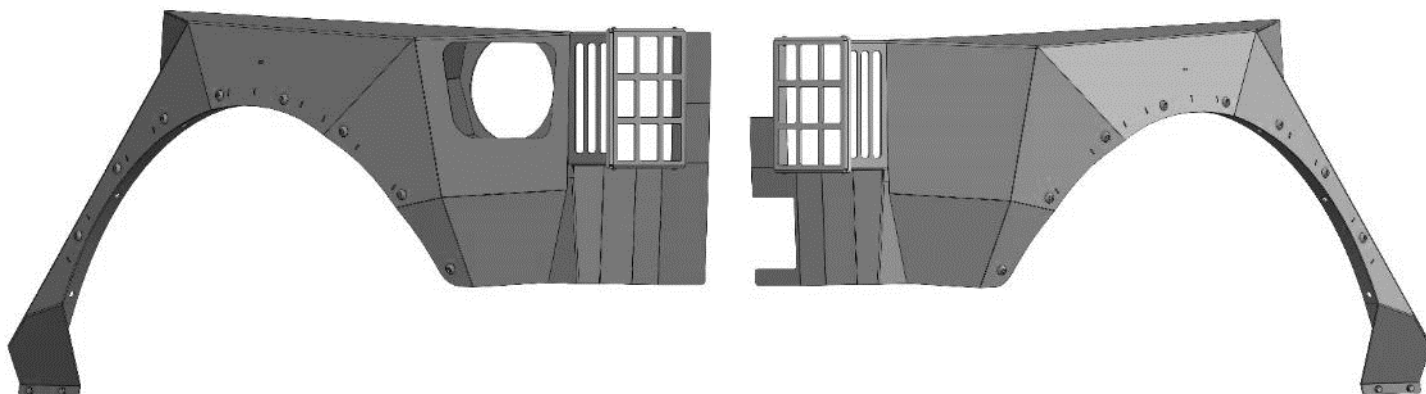




2007-2016 JEEP JK WRANGLER UNLIMITED 4-DOOR Pro-Series Rear Replacement Fenders



HARDWARE INCLUDED			
2	Tail Light Guards	8	8mm x 22mm x 2mm Flat Washers
8	4mm x 15mm Button Head Bolt	4	8mm Lock Washers
16	4mm x 8.65mm x .8mm Flat Washers	6	8mm x 30mm Hex Bolts
8	4mm Hex Nuts	2	8mm Lock Nuts
4	6mm Hex Bolts		
8	6mm x 12mm x 1.6mm Flat Washers	4	8mm Threaded Inserts
4	6mm Nylon Lock Nuts	1	8mm Insert Installation Tool Handle
16	10mm x 20mm Button Head Bolts	1	8-1.25mm x 35mm Hex Bolt (Use w/tool)
16	10mm x 20mm x 2mm Flat Washers	1	8mm x 24mm x 2mm Flat Washer (Use w/tool)
16	10mm Nylon Lock Nuts		
SPECIAL TOOLS REQUIRED			
1	Electric Drill	1	1/4" Drill Bit
		1	7/16" Drill Bit

PROCEDURE:

ASSISTANCE IS HIGHLY RECOMMENDED. Drilling is Required.

STEP 1- REMOVE CONTENTS FROM BOX. VERIFY ALL PARTS ARE PRESENT. READ INSTRUCTIONS CAREFULLY. Factory installed or aftermarket "Rock Rails," side steps or running boards will likely have to be removed to install fenders.

STEP 2- *Optional* Install the supplied decorative stainless steel hardware along the edge of the fender trim. Hardware consists of (1) 10mm Button Head Bolt, (1) 10mm Washer and (1) 10mm Nylon Lock Nut per hole in fender, (**Figure 1**).

STEP 3- Disconnect and isolate the battery negative cable.

STEP 4- Remove the license plate from the license plate mount. Remove the (2) screws attaching the license plate mount to the vehicle. Carefully unplug the license plate light harness, (**Figure 2**).

STEP 5- Remove the inner lens screws attaching the passenger side tail light assembly to the vehicle. Carefully remove the tail light assembly. Save hardware for re-installation, (**Figure 3**).

STEP 6- Remove the plastic push-in fasteners attaching the passenger side inner fender liner to the vehicle. Remove the inner fender liner, (Figures 4 & 5).

STEP 7- Starting at the front of the passenger side rear fender, remove the factory fender by pulling firmly, radially, up and away from the vehicle, (Figure 6).

STEP 8- Next, locate the (2) factory holes in the inner body panel, (Figure 7). Using a drill with a 7/16" drill bit, drill out the (2) designated holes for the threaded inserts, (Figure 8). **IMPORTANT!** Any cutting or drilling tool may break or shatter. Government regulations require safety glasses & equipment at all times when cutting or drilling.

STEP 9- Select (1) 8mm Threaded Insert, (1) 8mm x 35m Hex Bolt, (1) 8mm Flat Washer and the Insert Tool. Assemble the tool as pictured in Figure 9. Push the insert into the previously drilled hole and hold the insert in place by firmly grasping the insert tool handle. **NOTE:** If the insert is too tight to install, (push into hole), by hand, lightly tap into position with small hammer, (Figure 10). Turn the hex bolt, (tighten), with a wrench to expand the insert in the sheet metal body. Once the insert is fully compressed, remove the bolt and tooling from the insert **WARNING:** Do not over-tighten or damage to the part or insert may result. Repeat this step on the remaining drilled hole.

STEP 10- With assistance, carefully attach the passenger side RBP fender to the (2) previously installed 8mm inserts with (2) 8mm Hex Bolts, (2) 8mm Lock Washers and (2) 8mm Flat Washers. Attach the center mounting hole in the fender with the included (1) 8mm Hex Bolt, (2) 8mm Flat Washers and (1) 8mm Nylon Lock Nut. (Figure 7-8) Leave all fasteners hand tight.

STEP 11- Clamp the lower front of the fender to the pinch weld. (Figure 11) Using the two holes in the RBP fender as a guide, use a 1/4" drill bit to drill both holes through the pinch weld.

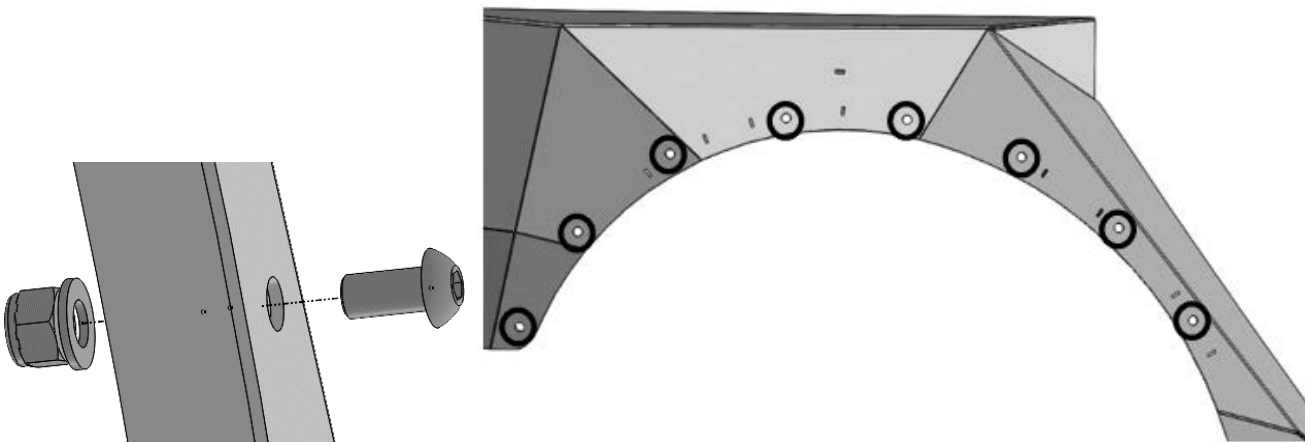
STEP 12- Attach the front of the fender to the pinch weld with the included (2) 6mm Hex Bolts, (4) 6mm Flat Washers and (2) 6mm Nylon Lock Nuts. Do not fully tighten the hardware at this time.

STEP 13- Re-install the passenger side tail light assembly.

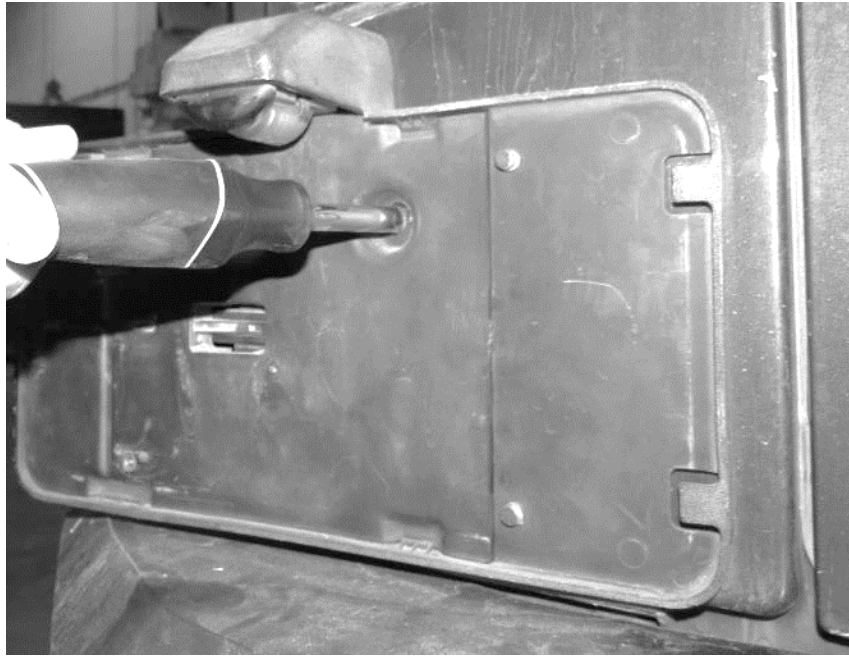
STEP 14- Slowly open the rear door to check for clearance. Make any necessary adjustments and fully tighten all of the fender bolts.

STEP 15- Attach the passenger side tail light guard using the included (4) 4mm Button Head Bolts, (8) 4mm Flat Washers and (4) 4mm Hex Nuts.

STEP 16- Repeat steps 5-15 for driver side fender installation.



(Figure 1) Install stainless steel decorative hardware. 8 bolts per side.



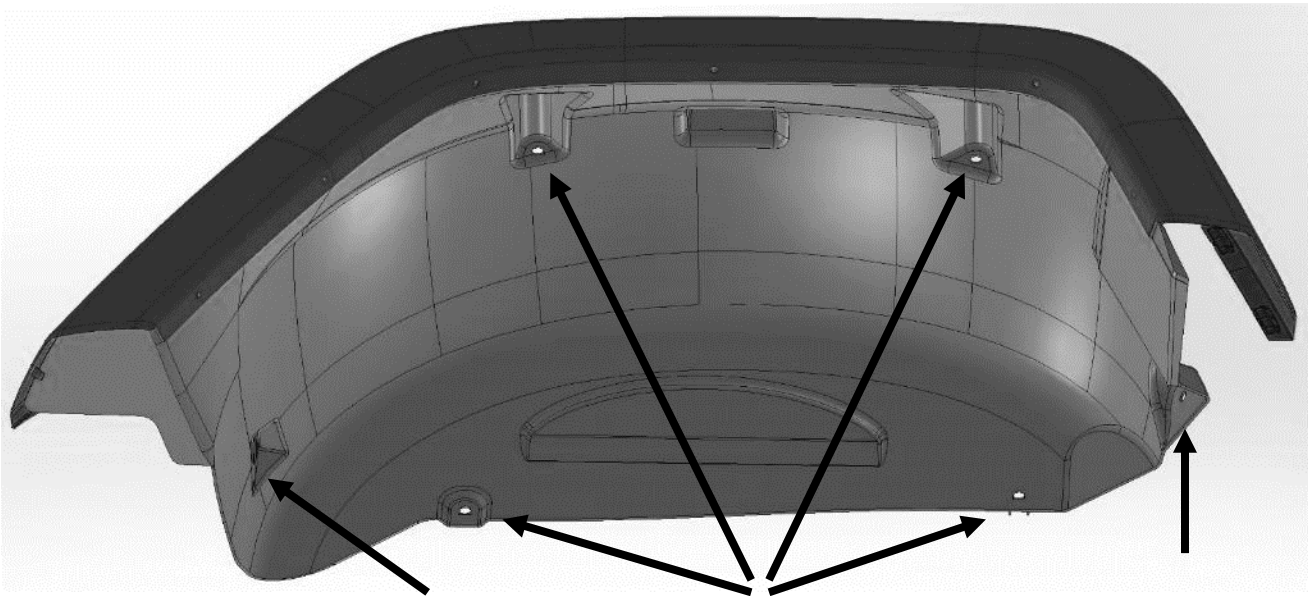
(Figure 2) After removing the license plate, remove the 2 screws holding license plate mount to the body.



(Figure 3) Remove the 2 inside screws holding tail lights to the body.



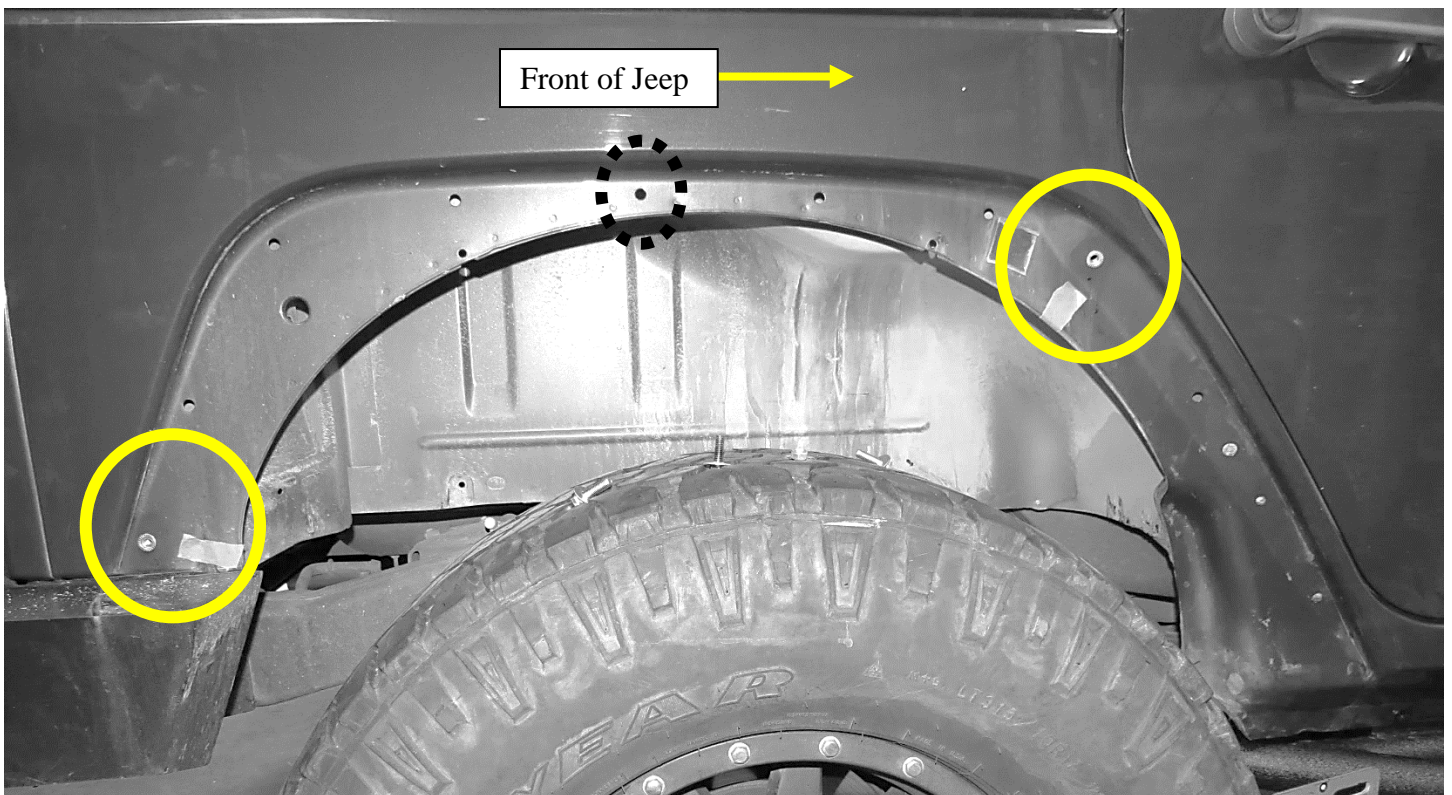
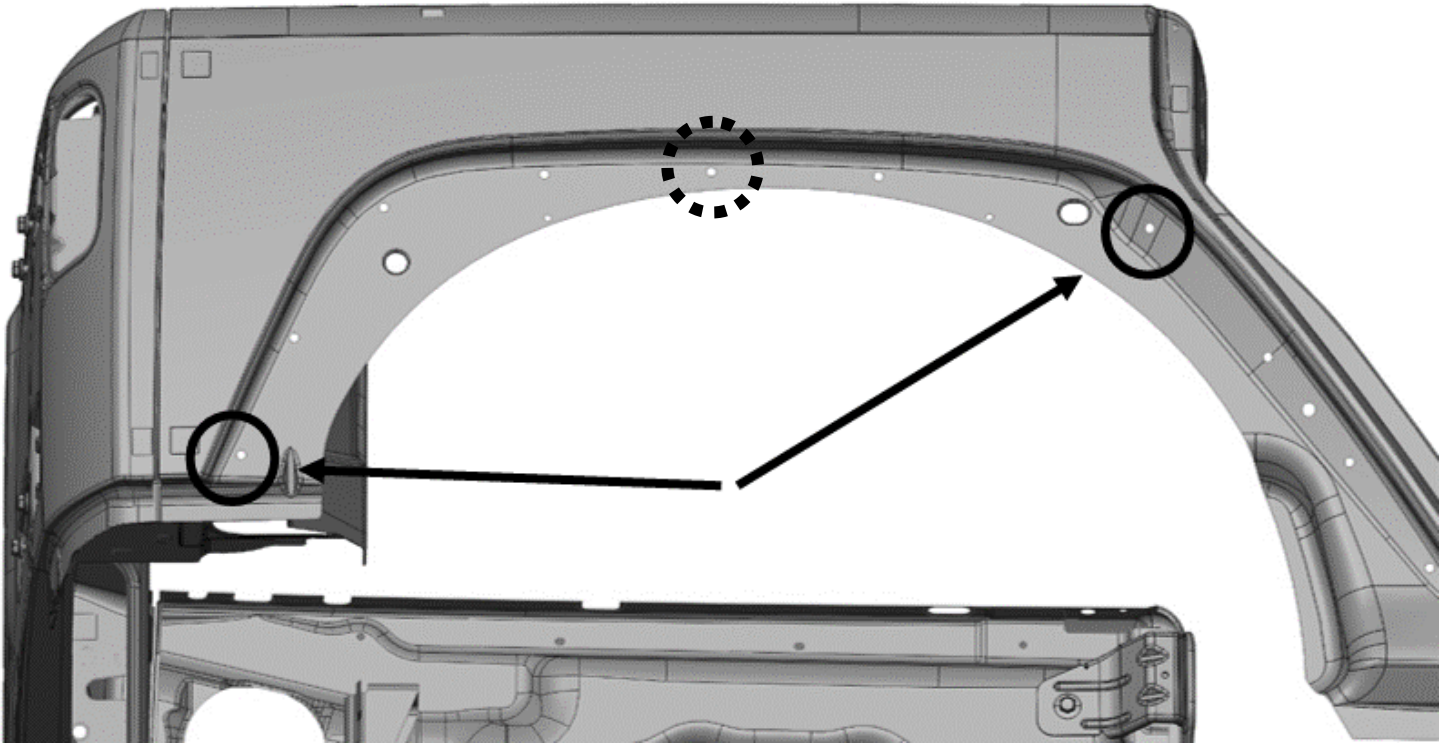
(Figure 4) Pry to remove the plastic fasteners that are securing the inner fender liner.



(Figure 5) Depending on the model year of your Jeep, there will be 5 or 6 Christmas tree fasteners retaining the inner fender liner.



(Figure 6) Remove the factory fender flare by grabbing firmly and pulling radially out and away from the vehicle.

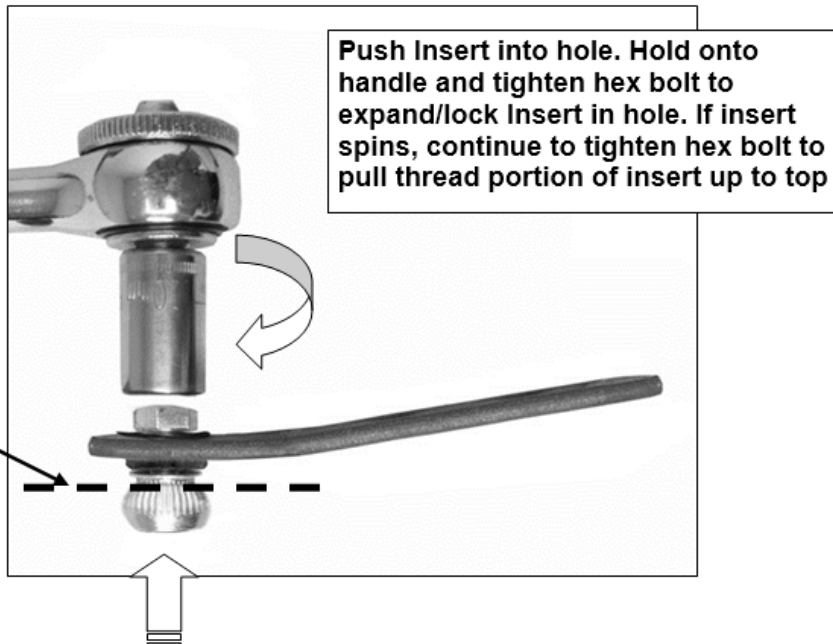


(Figures 7 & 8) Drill out the two locations per side using a 7/16" drill bit.
Note the center bracket location within the dotted circle.



Insert Tool Assembly

Dashed line
represents metal
panel requiring
Threaded Insert



(Figure 9)



(Figure 10) Insert tool assembly



(Figure 11) Use 1/4" drill bit to drill out both holes in the pinch weld using fender as a guide.



Completed Installation